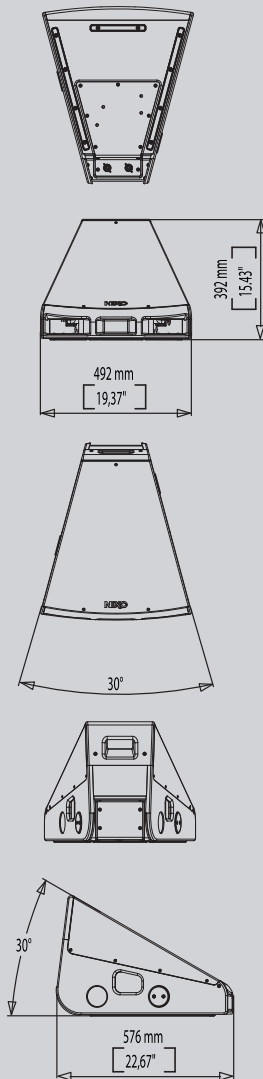


## 45N 12



### Key Features

- World's first line monitor.
- Can be joined together into arrays to provide a scalable solution for wider coverage and higher SPLs.
- Very high headroom before feedback.
- Focusses coverage only where needed for lower acoustic power on stage.
- Discreet, low profile design.
- Ingenious magnetic locking system.
- Non-slip base with skid system and ergonomic handle for easy repositioning on stage.



The revolutionary NEXO 45N-12 is the world's first line monitor, bringing all the benefits of line array technology to the stage.

Unlike a conventional high frequency waveguide in which the exit is rectangular, the NEXO monitor's waveguide forms a 'smile' enabling cabinets to be linked together to form arrays with no interference between wavefronts. Now there's a single monitor reference covering the needs of all musicians, scalable for wider coverage and higher SPLs.

The 45N-12 delivers very high headroom before feedback, and focusses coverage only where it's needed, resulting in lower acoustic power on stage. SPL and frequency response are consistent up to 2.5 metres back.

An ingenious magnetic locking system joins multiple monitors together to form arrays. The compact, low profile design is less conspicuous than conventional monitors (ideal for live TV production), and the 45N-12 features a non-slip base with a skid system and ergonomic handle for easy repositioning on stage.

### System Applications

- Touring or fixed live sound applications.
- Live television production.
- Single monitor reference covering the needs of all musicians.



Waveguide forms a 'smile' to eliminate wavefront interference when monitor is arrayed.



Ingenious magnetic locking system joins multiple cabinets into arrays.

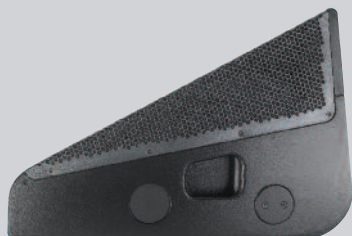
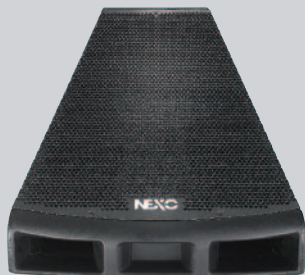


# 45N-12

## Stage Monitor Preliminary Data Sheet

# NEXO

# 45N 12



NEXO is one of the world's leading sound reinforcement loudspeaker manufacturers. Founded in 1979, the company is dedicated to crafting practical solutions with solid engineering. Each new design begins with a proprietary sophisticated computer simulation process that allows every parameter to be extensively modeled and simulated, leading to breakthrough cost and performance gains. NEXO's comprehensive product line includes loudspeakers, analogue and digital control electronics and amplification; all designed to deliver consistent sound quality and long term reliability for a broad range of applications.

NEXO S.A.  
Parc d'Activité  
du Pré de la Dame Jeanne  
B.P. 5  
60128 PLAILLY  
Tel: +33 (0) 3 44 99 00 70  
Fax: +33 (0) 3 44 99 00 30  
e-mail: info@nexo.fr

NEXO LatAM  
C.C. No 33. Suc 49  
Caballito (1449)  
Buenos Aires  
Argentina  
Tel: +54 114 432 1911  
Fax: +54 114 431 1007  
e-mail: info@nexo.fr

NEXO Asia  
GPO Box 806  
Hong Kong  
SAR China  
Tel: +852 9096 3472  
Fax: +852 2104 3214  
e-mail: info@nexo.fr

# NEXO

www.nexo.fr

### 45N-12 PRODUCT FEATURES

Components	LF 1 x 12" (30 cm) high excursion Neodymium 8Ω driver. HF 1 x 3" voice coil, 1.4" throat Neodymium 16Ω compression driver on a 22.5° hyperboloid reflective wavesource.
Height x Width x Depth	392 x 492 x 576 mm (15.43" x 19.37" x 22.67").
Net Weight	24 kg (53 lbs).
Connectors	2 x NL4MP Speakon 4 pole.
Construction	Main structure: Baltic Birch Ply finished with structured black coating. Rear lower and bottom section: Steel with dark grey coating. Front vents and rear upper section: Injected polyurethane front vents, black coating.
Fittings	4 handles (2 side metal recessed, 2 front and rear moulded).
Front Finish	Perforated dark grey metal grille.
Locking Elements	Integrated magnets for mechanical locking.

### SYSTEM SPECIFICATIONS 45N-12 with NX TD Controller

Frequency Response [a]	55Hz - 19kHz ±3dB.
Usable Range @-6dB [a]	50Hz - 20kHz.
Sensitivity 1W @ 1m [b]	106dB SPL Nominal / 104dB SPL Wideband.
Nominal Peak SPL @ 1m [b]	1 unit: 137 to 140dB Peak / 2 units: 140 to 143dB Peak.
HF Dispersion [c]	30° Horizontal - Scalable 30° steps when arrayed. 22.5° Diagonal (Coupling Plane) - Scalable 22.5° steps when arrayed. 60° Vertical (Asymmetrical -45° / +15°).
Crossover Frequencies	LF-HF: 1kHz Active or Passive (internally configurable).
Nominal Impedance	Active LF 8Ω, HF 16Ω. Passive 8Ω.
Recommended Amplifiers	Active LF 1000 to 1500 W 8Ω / HF 250 to 500 W 16Ω. Passive 1200 to 2000 W 8Ω.

### SYSTEM OPERATIONS

Electronic Controller	The NEXO TDcontroller's presets are precisely matched to the 45N Series cabinets and include sophisticated protection. Using 45N Series cabinets without a properly connected NEXO TDcontroller will result in poor sound quality and can damage components.
Dispersion configuration	Internally mounted magnets allow 45N-12 inter-cabinet locking for coverage / SPL scalability.
Sub-bass	LS600 extends system low frequency response down to 38 Hz.
Speaker Cabling	Active: 1~/1+~LF; 2~/2+~ HF. Passive: 1~/1+~: Not Connected; 2~/2+~LF + HF.

As part of a policy of continual improvement, NEXO reserves the right to change specifications without notice.

[a] Response curves & data : Half-Space Far Field for the 45N-12 + NXTD.

[b] Sensitivity & Peak SPL data : these will depend on spectral distribution and crest factor of program material. Measured with band limited Pink Noise. Nominal refers to Voice Decade (300Hz - 3kHz), Wideband to the specified ±3dB range. Data are for speaker + processor + recommended amplifier combinations. Peak SPL is at clipping of recommended amplifier.

[c] Directivity curves & data : obtained by computer treatment on off axis response curves.

E&OE September 2010.

#### LIMITED WARRANTY

NEXO loudspeakers and electronics are covered against defects in workmanship or materials for a period of two (2) years from the original date of purchase. At the option of NEXO the defective item will be repaired/replaced with no charge for materials/labour. The item is to be adequately packaged and dispatched, pre-paid, to a NEXO authorised distributor/service centre. Unauthorised repair shall void the warranty. The NEXO warranty does not cover cosmetics or finish and does not apply to any items which in NEXO's opinion have failed due to used abuse, accidents, modifications or any type of misuse. All images and text herein are the property of NEXO SA, and deemed accurate, although specifications are subject to change without notice.